

**PINTA:ELEMENTS**

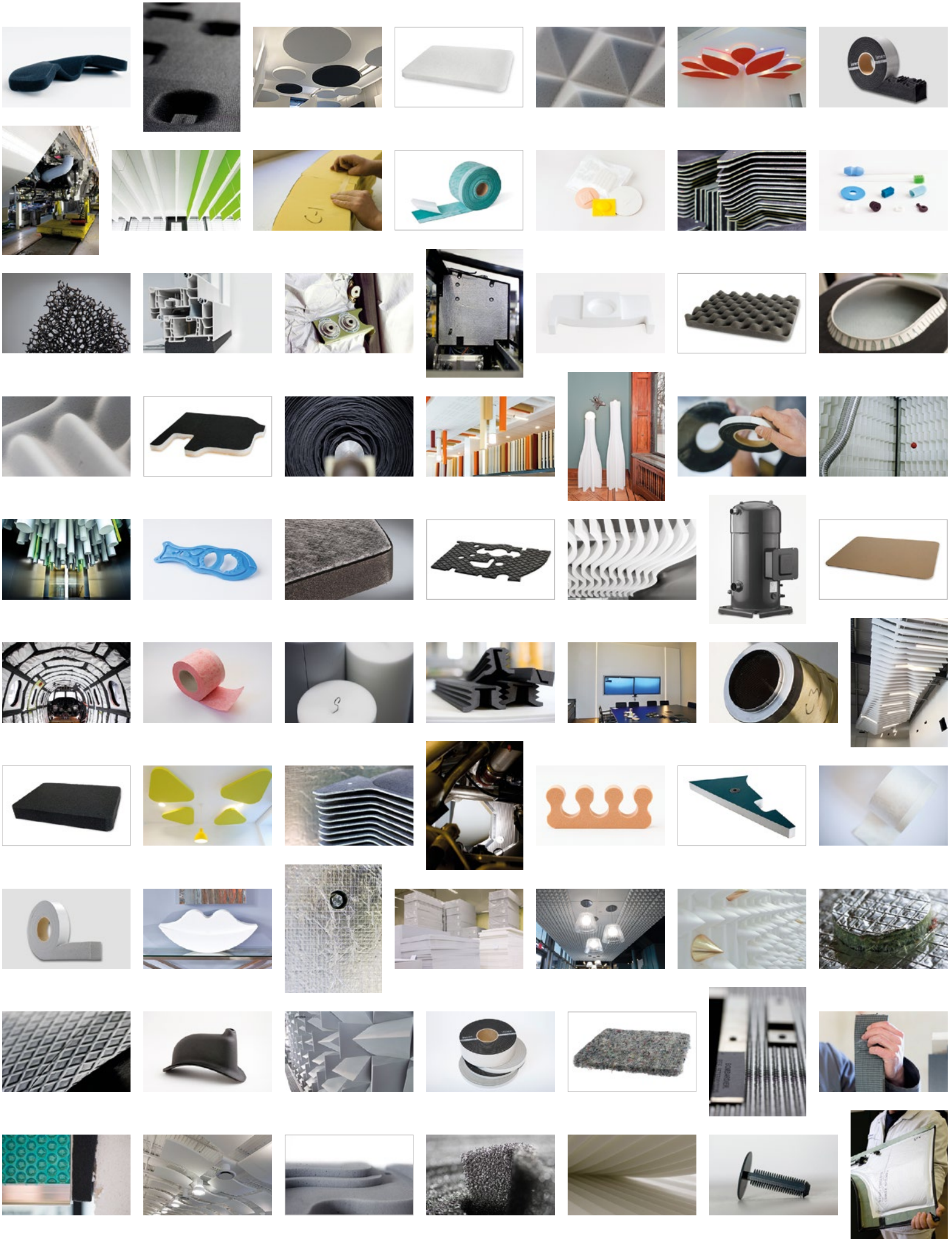
---

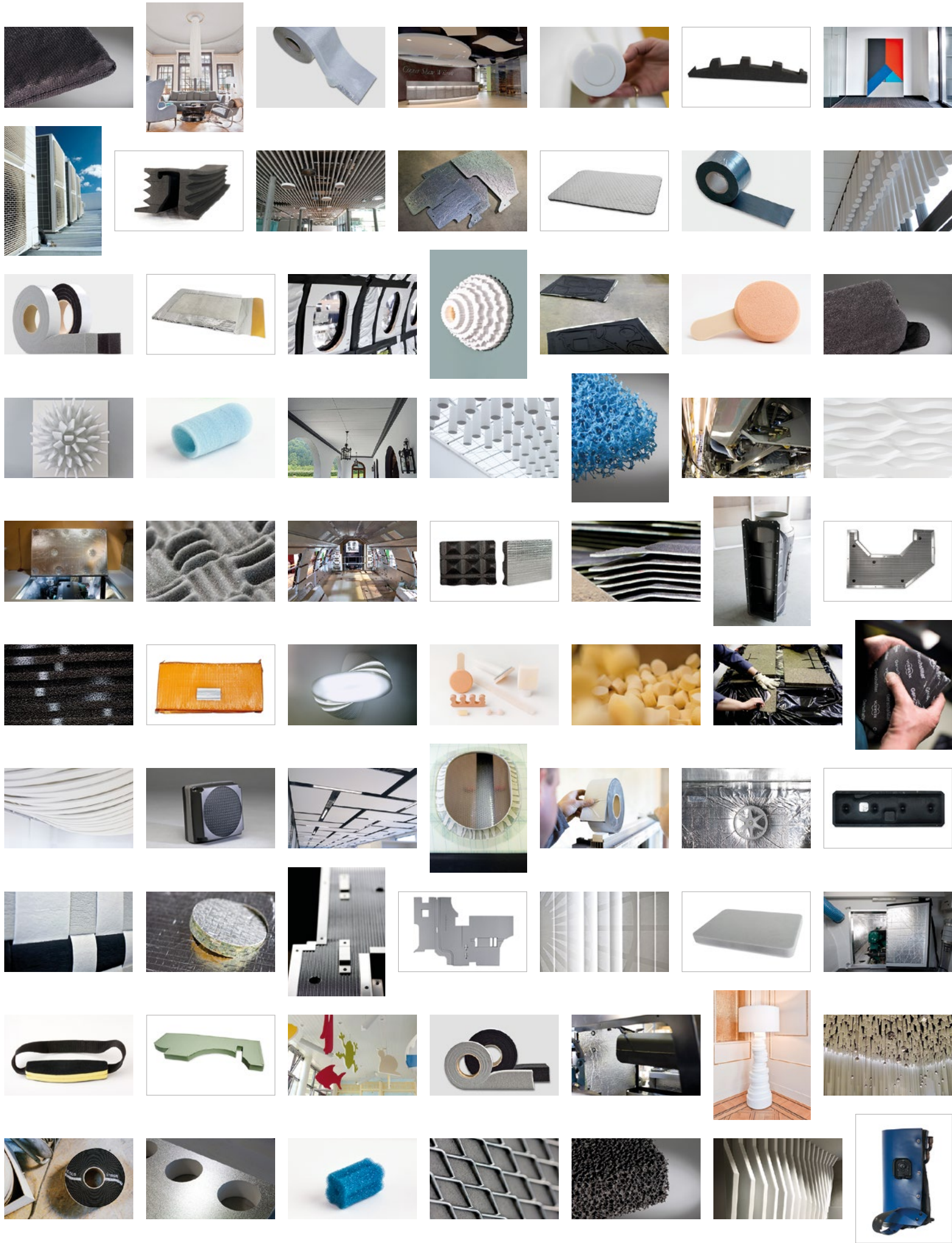
ENGINEERING COMFORT

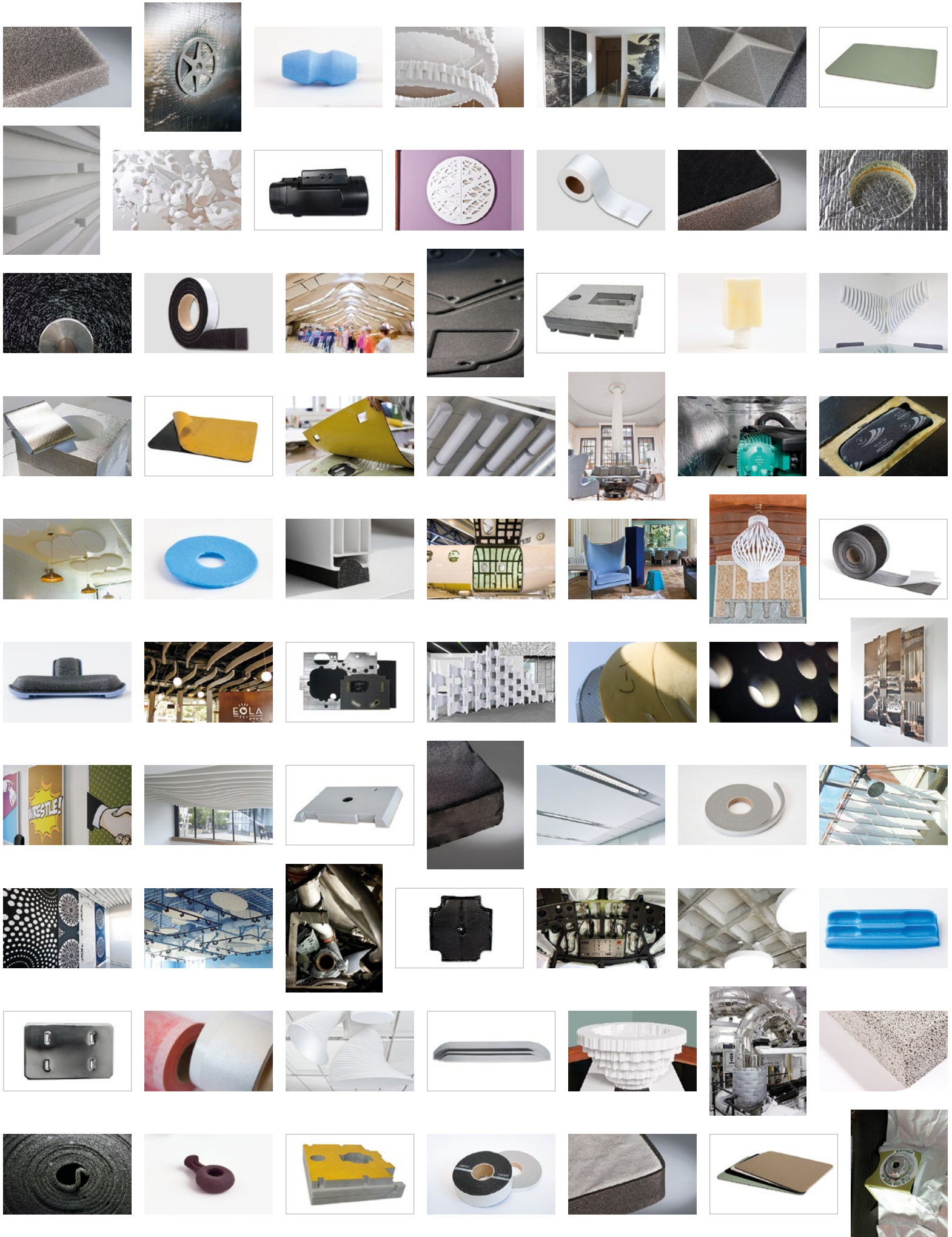
# **10.379**

**running products**

JANUARY 2019







**engineering comfort.**

## **MARKETS**

Rail

HVAC

Specialty Vehicles

Odor Filtration

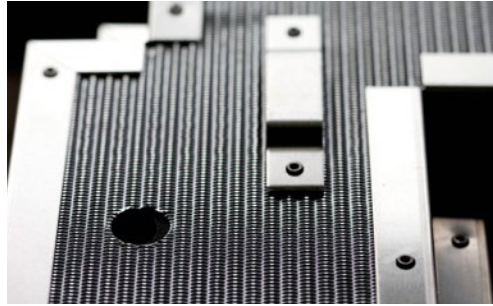
Medical

Architectural Acoustics

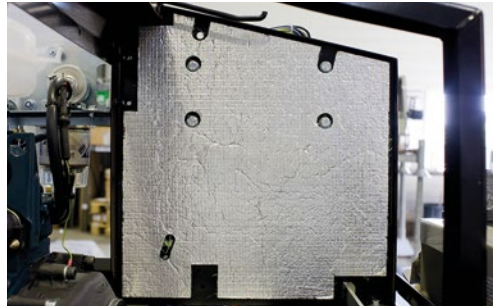
Abdichtung

**solutions.**

## RAIL



## SPECIALTY VEHICLES



## HVAC



---

➔ Thermal and Acoustic Insulation

## ODOR FILTRATION



→ Activated Carbon

## MEDICAL



→ Useful Devices

## ARCHITECTURAL ACOUSTICS



→ **Designed Acoustics**

## ABDICHTUNG



→ **Sealant Tapes + Systems**

## PROCESS

**01**

**Understanding**  
the application



**02**

**Engineering**  
the solution



**03**

**Manufacturing**  
a system



**04**

**Installation**  
of the system + making sure  
it works

## **PATH**

**2004**

---

Initiation of pinta elements out of illbruck GmbH.  
Started with 18 people in one location, with a turnover of 3.6 mio CHF annually. Courgenay is the start of pinta.

**2019**

---

Today we are over 200 people in 7 locations, and over 48 mio CHF annual turnover.  
Bueckeburg K36 + K4, Minneapolis, Aubergenville, Maisach, Courgenay, Leichlingen.

## **FUTURE**

We  
stay  
**focused**



We will  
actively create  
**innovative solutions**



We see  
in that  
an  
abundance of  
**opportunities**



**THE FIGHT GOES ON...**



pinta filtration

pinta industry

pinta acoustic

pinta medical

pinta abdichtung